



ZEBRA



Direct Product Identification Labeling Solutions

DURABLE LABELS THAT ENSURE COMPLIANCE AND MEET CUSTOMER REQUIREMENTS

Product identification labels are critical for maintaining compliance, meeting customer requirements and improving operational efficiency. They help you keep the process running smoothly as operations-critical data moves throughout your organization. Identification labels are the final link between your company, customers and regulators.

It is, therefore, essential that those labels remain readable and scannable well after they leave your operation, throughout the products lifespan and their safe and appropriate disposal. **If something goes wrong with your printing supplies, operations are interrupted, productivity and efficiency suffer, and costs rise due to:**

- The need to re-print labels and service your printers more often
- Premature printhead failure
- Increased IT calls
- Non-compliance with regulations and/or failure to meet customer's requirements

**47%****of manufacturers**

experience costly downtime due to product labeling issues

Zebra® Certified Supplies. Consistently exceptional—and exceptionally consistent

Purchasing Certified Zebra® Supplies means you consistently get quality supplies with high performance you can rely on. It means never having to worry about thermal printing supply issues interrupting your operations or impacting customer satisfaction.

Consistently Outstanding Quality

We apply thoughtful care and meticulous engineering to every label and ribbon we produce. It is about ensuring consistently high performance for your Zebra printers and applications.

- Once we spec in a material or ribbon formulation we never substitute it for any reason
- Zebra extensively tests all the materials and ribbons we offer in Zebra printers including production trials, print quality, printer wear and tear, and application testing to ensure premium craftsmanship.
- We are ISO 9001:2015 certified.

Exceptional Service

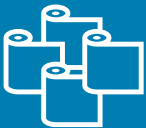
One of the largest and most experienced thermal label convertors in the world, Zebra has the size, scale and infrastructure to provide unparalleled service for all your Zebra printing supply needs.

- With four locations in the U.S., we're able to produce and ship orders quickly so you get the printing supplies you need, when and where you need them.
- Zebra can consult with you to design, produce and deliver custom printing supplies to meet unique needs.
- Zebra offers one of the largest selections of UL/cUL-certified label and ribbon combinations. In addition, we are authorized to pre-print the UL mark.

ZEBRA CERTIFIED SUPPLIES

Exceptionally Consistent and Consistently Exceptional

1



We sift through thousands of available media options.

2



Our R&D experts select, convert and rigorously test all materials.

3



We certify only those offering the best thermal printing performance.

4

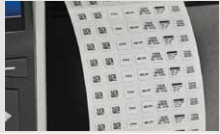


We never substitute raw materials, so our customers get consistent quality.

FACT SHEET

DIRECT PRODUCT IDENTIFICATION LABELING SOLUTIONS

Electronics



There are thousands of electronics devices that require identification. Not only are the finished goods identified, but many of the small components within them require identification. No matter the size of the label needed, Zebra can offer solutions as small as ¼" x ¼" to meet the requirements of your application. With over 60 UL/cUL-certified label and ribbon combinations and authorization to pre-print the UL mark, Zebra can provide you with a solution to meet UL requirements.

Sub-Segment	Label Material	Material Type	Key Features	Ribbon
Electronics Components ie. lighting, semi conductor, integrated circuits, microprocessors	Z-Supreme™ 2000T	Gloss polyimide label. Available in white	UL recognized, Resistant to high temperatures Excellent chemical resistance	6200
	Z-Ultimate® 4000T	Gloss polyester label	UL recognized, Standard temperature resistance, Fits a wide range of solutions at a competitive price	5100
Computer and Office Equipment ie. computer hardware, peripherals	Z-Xtreme 4000T	Matte polyester label. Available in white & silver	UL recognized, Excellent chemical resistance Matte finish	6200
	Z-Ultimate 2000T	Gloss polyester label. Available in white	UL recognized, Gloss finish, Moderate chemical resistance, Scratch & outdoor resistance	6200
	Z-Ultimate 4000T	Gloss polyester label	UL recognized, Stronger and more durable adhesive, Gloss finish	5100
Telecommunications Communication equipment and services	Z-Ultimate 2000T	Gloss polyester label. Available in white	UL recognized, Gloss finish, Moderate chemical resistance, Scratch & outdoor resistance	6200
	PolyPro™ 3000T Matte	Matte polyester label. Available in white	Indoor use. Resistant to low temperatures	3200
	PolyPro 3000T High-Tack	Matte polypropylene label	Indoor use. High initial adhesive tack	3200
Consumer Electronics ie. Household appliances, audio	Z-Xtreme 4000T	Matte polyester label. Available in white & silver	UL recognized, Excellent chemical resistance, Matte finish	6200
	Z-Ultimate 2000T	Gloss polyester label. Available in white	UL recognized, Gloss finish, Moderate chemical resistance, Scratch & outdoor resistance	6200
	Z-Ultimate 4000T	Gloss polyester label	UL recognized, Stronger and more durable adhesive, Gloss finish	5100
Industrial Electronics Electronic components and systems for industrial environment	Z-Xtreme 4000T	Matte polyester label. Available in white & silver	UL recognized, Gloss finish, Moderate chemical resistance, Scratch & outdoor resistance	6200
	Z-Ultimate 2000T	Gloss polyester label. Available in white	Indoor use. Resistant to low temperatures	3200
	8000T Piggyback Clear Matte	Piggyback matte polyester label. Available in Clear	Moderate chemical resistance, Apply label and reapply to another surface.	3200

For more information, visit www.zebra.com/supplies



NA and Corporate Headquarters
+1 800 423 0442
inquiry4@zebra.com

Asia-Pacific Headquarters
+65 6858 0722
contact.apac@zebra.com

EMEA Headquarters
zebra.com/locations
contact.emea@zebra.com

Latin America Headquarters
+1 847 955 2283
la.contactme@zebra.com